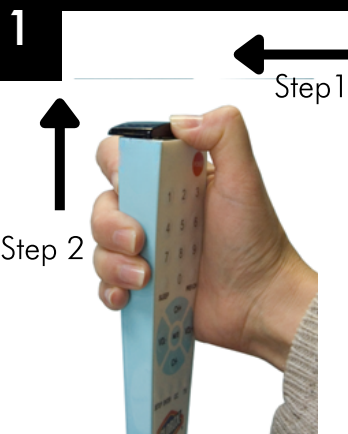


INSTRUCTIONS FOR CR4-2 and CR4B-2

*Philips, LG, Samsung and *RCA TV Remote Control

Battery Installation

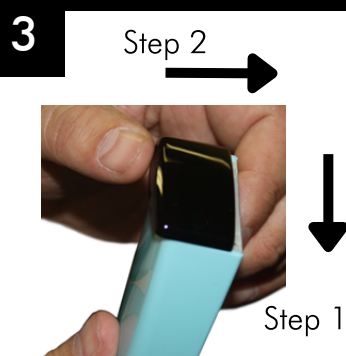


Step 2

Looking at the keypad, slide the dark lens cover away from you (STEP 1) and lift the lid from the back (STEP 2).



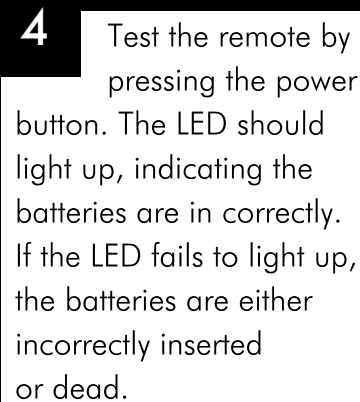
Install 2 AAA batteries. Make sure the + and - symbols on the metal hinge of the battery compartment correspond with the + and - end of each battery.



Step 2

Step 1

With the keypad facing away from you, close the cover by gently pressing it down (STEP 1) and sliding it until it aligns with the front (keypad) of the device (STEP 2).



Test the remote by pressing the power button. The LED should light up, indicating the batteries are in correctly. If the LED fails to light up, the batteries are either incorrectly inserted or dead.

Important: The optional screw for the battery compartment is taped to the (blue) boxes lid.

The Remote Is Now Ready To Operate ANY *Philips, LG, Samsung or *RCA TV

*RCA & *Philips Hospitality TVs

Philips TV Tips

Operating your Philips Commercial TV with the Clean Remote CR4-2 and CR4B-2 is effortless. All of the TV's functions can be accessed instantly without any setup required; simply install batteries.

Did you know your Philips TV can power on to a TV Channel or the Home Screen?

The following options may be helpful but are not required: Your TV's home screen serves as the central hub for many TV features. By default, the Philips TV powers ON to this screen, providing guests with easy access to popular streaming apps like NETFLIX and YouTube, as well as casting. However, if your property does not offer these smart features, you can adjust the "Switch On Settings" so that the TV turns ON and displays regular TV channels instead.

For more information on changing your TV's "Switch On Settings" contact your Philips Dealer or visit the FAQ page on cleanremote.com. Regardless of the setting you choose, launching TV, streaming, and casting options can be done from the home screen.

Note: The CR4-2 and CR4B-2 feature a dedicated INPUT button, unlike the original Philips remote. When pressed, the INPUT button will take you to the home screen, where you can access the TV's INPUTS via the Channel Listing function.